



SPYDERCRANE[®]

URW095 SERIES

MINI-CRAWLER CRANE

WHAT IS A SPYDERCRANE®?

A SPYDERCRANE Mini-Crawler is a mini-crane that has been designed and built for working in low access confined areas either indoors or outdoors. It is mounted on a dual track chassis with "spider-type" legs for its outriggers.

SPYDERCRANES are revolutionizing many industries by offering a flexible and versatile crane that while strong enough to lift up to 6.6 tons*, can be used where a conventional truck mounted crane or carry-deck crane will not have access due to its size.



24"
*when stored
in travel mode*
wide



As the North American Distributor of SPYDERCRANES, Smiley Lifting Solutions has a wide range of mini-crawler cranes available. Whether your jobs are small or large, there is a SPYDERCRANE model that is the perfect fit. With a wide range of engine types and accessories available, we can provide you with a SPYDERCRANE to fit your exact needs.

* Based on specifications of the URW706 SPYDERCRANE

31ft
Tip Height

1,990
lbs Capacity



U-WAVE
**Wireless Radio
Remote Control**

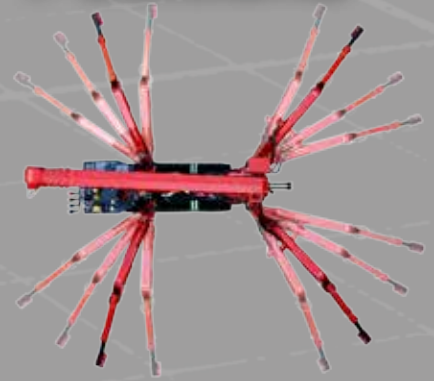
LOAD CHARTS

LOAD CHART

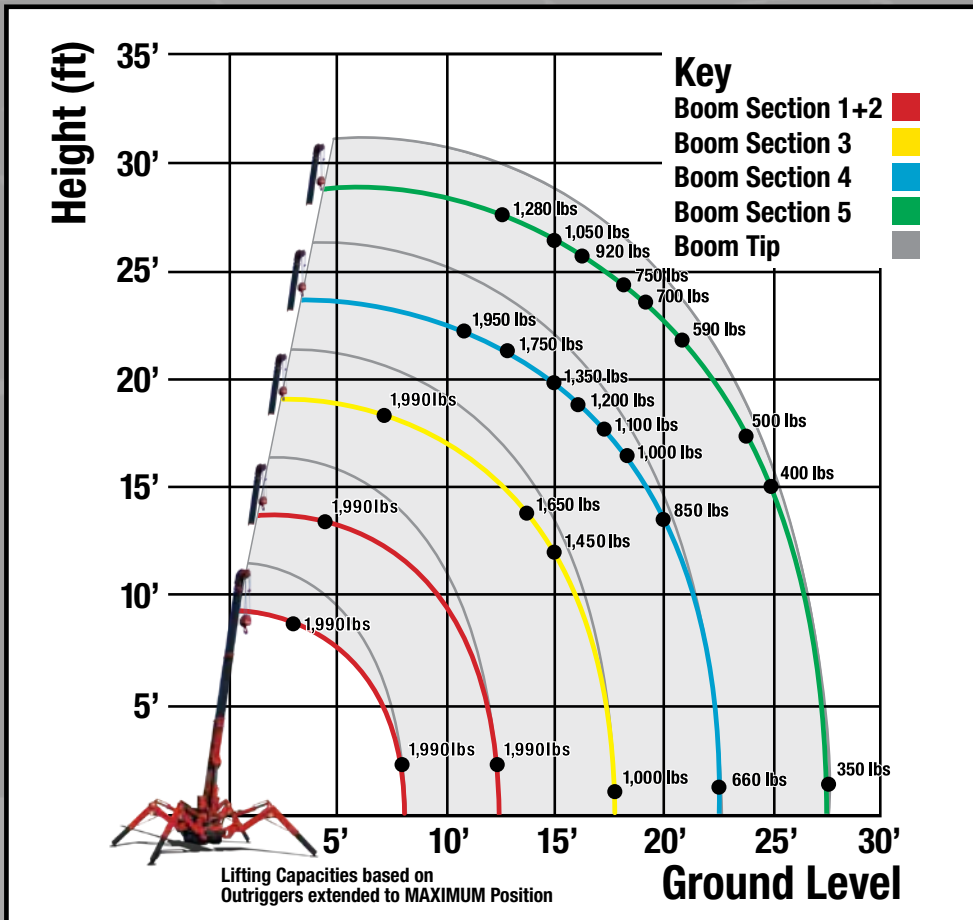
Lifting capacity varies depending on outrigger configuration and boom length and angle.

BOOM SECTION 1 EXTENDED BOOM SECTION 1 + 2 EXTENDED										
Working Radius (ft.)	3	4.5	5	6	7	8	10	11	12.58	
Outriggers Maximum (lbs.)	1,990	1,990	1,990	1,990	1,990	1,990	1,990	1,990	1,990	
Outriggers Minimum (lbs.)	1,990	1,990	1,990	1,990	1,990	1,600	1,100	950	600	
BOOM SECTION 1 + 2 + 3 EXTENDED										
Working Radius (ft.)	7	8	9.5	10	11	12	14	15	17.62	
Outriggers Maximum (lbs.)	1,990	1,990	1,990	1,990	1,990	1,950	1,650	1,450	1,000	
Outriggers Minimum (lbs.)	1,850	1,550	1,250	1,150	1,000	780	600	550	300	
BOOM SECTION 1 + 2 + 3 + 4 EXTENDED										
Working Radius (ft.)	11	12.5	13	15	16	17	18	20	22.61	
Outriggers Maximum (lbs.)	1,950	1,950	1,750	1,350	1,200	1,100	1,000	850	660	
Outriggers Minimum (lbs.)	1,000	800	750	600	510	450	370	280	200	
BOOM SECTION 1 + 2 + 3 + 4 + 5 EXTENDED										
Working Radius (ft.)	12.5	13.5	15	16	18	19	21	23	25	27.59
Outriggers Maximum (lbs.)	1,280	1,280	1,050	920	750	700	590	500	400	350
Outriggers Minimum (lbs.)	850	700	600	530	420	380	300	220	180	130

52
Possible
Outrigger
Positions



WORKING RADIUS








**OUTRIGGERS
MINIMUM**



**OUTRIGGERS
MAXIMUM**

SPECIFICATIONS

	URW095CP1URS & URW095CP1URS/P	URW095CP1UMRS & URW095CP1UMRS/P	URW095CP1UBRS	URW095C4URS	URW095C4UMRS
Engine / Motor					
Engine Manufacturer:	Mitsubishi (Gas)	Mitsubishi (Gas)	DC	Kubota	Kubota (Diesel)
Maximum Output:	Gasoline - 13HP Propane - 11.7HP	Gasoline - 13HP Propane - 11.7HP Electric - 5HP/220V (Single Phase)	48V Battery 110V Electric	7.2kw	Diesel- 7.2kw Electric - 5HP/220V (Single Phase)
Tank Capacity:	1.85 gal	1.85 gal		2.7 gal	2.7 gal
Starting Method	Electric and Recoil Start as Standard		N/A	Electric Start	
Crane Capacity	1,990 lbs @12.5 ft				
Max Working Radius	1.4 - 28.0 ft				
Tip Height	31 ft (37 ft with Jib)				
Turning Radius	Turns within its dimensions				
Dimensions when Folded (ft.)	2.0 x 4.6 x 9.0 (W x H x L)			2.0 x 4.6 x 9.1 (W x H x L)	2.0 x 4.6 x 9.0 (W x H x L)
Weight	4,200 lbs	4,380 lbs	4,360 lbs	4,245 lbs	4,425 lbs
Outrigger Point Loading	152.2 psi on standard outrigger pads (7" x 4.5") (Specific point landing available upon request)				
Hook Speed	Capacity: 1,955 lbs. at 4th layer 2-Part-Line				
	65 ft/min at 4th layer	65 ft/min at 4th layer Electric: 52 ft/min at 4th layer	60 ft/min at 4th layer	65 ft/min at 4th layer	65 ft/min at 4th layer Electric: 52 ft/min at 4th layer
Telescopic System	Boom Length: 8.3 ft (retracted) to 28.4 ft (extended) Boom Type: 5-Section hydraulically telescoping boom, with hexagonal box construction				
Telescoping Speed	20 ft / 20 seconds				
Boom Lift Speed	0° – 78° / 11 sec	Gas: 0° – 78° / 11 sec Electric: 0° – 78° / 15 sec	0° – 78° / 15 sec	0° – 78° / 11 sec	Diesel: 0° – 78° / 11 sec Electric: 0° – 78° / 15 sec
Traction System	Travel Speed: 0-1.43 mph				
	Gradability: 20°				
	Track Ground Pressure: 6.96 psi				
Accessories & Options	<ul style="list-style-type: none">• SPYDERWEB 5-Axis fixed Glass Manipulator - Attaches directly to boom for rigid application• 6 ft offsettable Jib with Searcher Hook and Single-Line Swivel Ball• Custom SPYDERCRANE Trailer - Includes Track Mats, Tool Box, Outrigger Pads and Fuel Containers		<ul style="list-style-type: none">• Auxilliary Winch Kit - 2,000 lb Single-Line Pull, 330 ft., 5/16" Wire Rope, 90 FPM• MYLAR Non-Marking Tracks• Single-Part Reeving and Two-Part Reeving capability		



5326 W. Mohave St | Phoenix, AZ 85043
 844.264.8994 | 602.442.4000
 Visit us on the web at SmileyLiftingSolutions.com

Product specifications are subject to change without notice. No specific training or license is required to operate the SPYDERCRANE in most areas, but operators are responsible for knowing and meeting all safety requirements and regulations.

URW095 Spec Sheet - April 2017