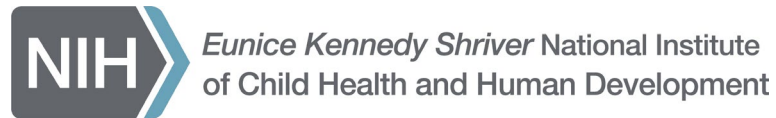


Community Champions for Disability Health Challenge

Pre-application Webinar

September 26, 2024



Agenda

- Introductions
- Motivation for the Challenge
- Challenge Details
- Q & A – Discussion



Presenters



Theresa Cruz, PhD
Director, NCMRR



Ralph Nitkin, PhD
Deputy Director, NCMRR



Sybil Philip, MS
Deputy Executive
Officer, NICHD



Jamie Elliot
Challenge Designer,
HeroX



National Institutes of Health (NIH)



NIH is our nation's medical research agency



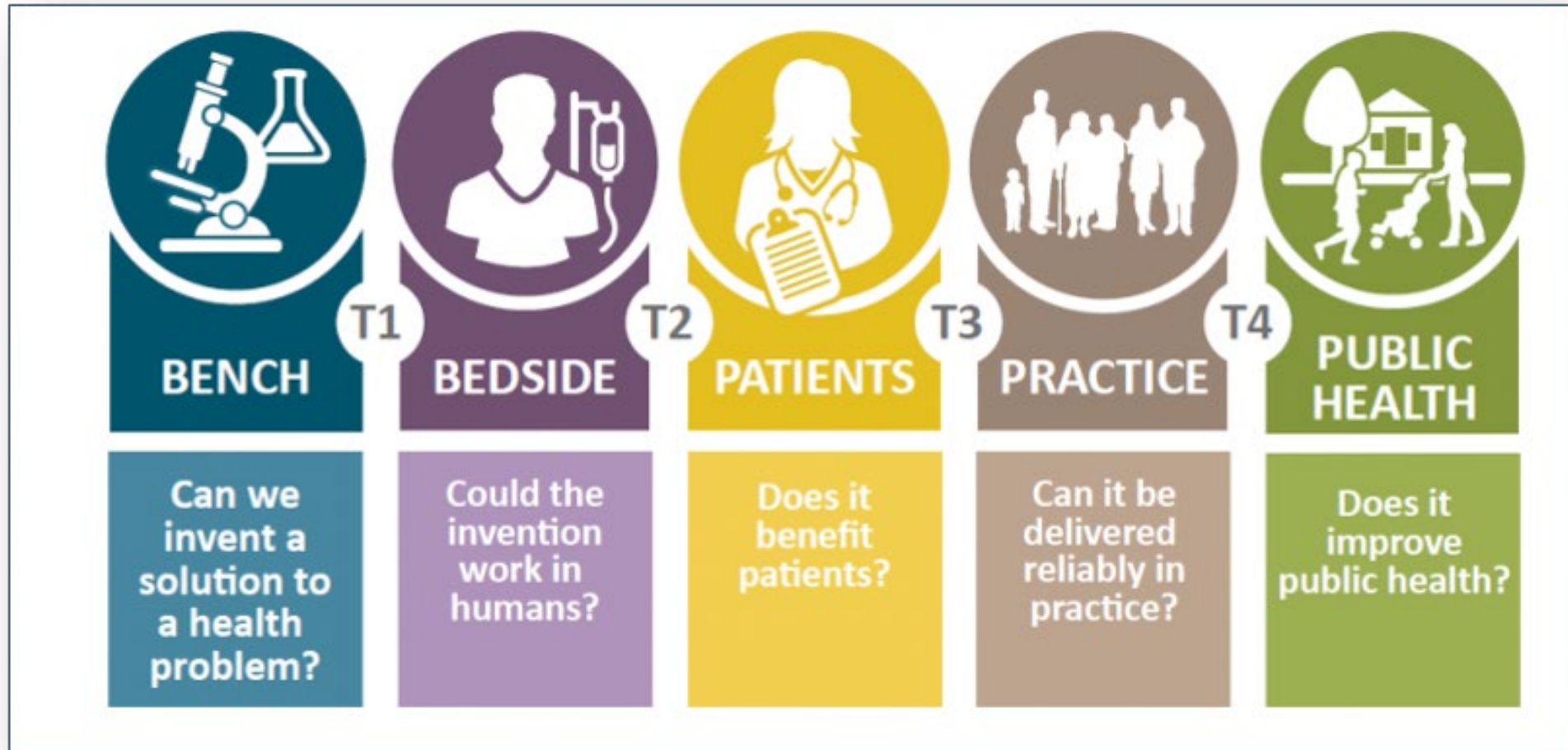
NIH is the largest funding source for medical research in the world



NIH seeks to enhance health and optimize function for all



NIH funds across the health research spectrum



Graphic from Georgetown-Howard Universities Center for Clinical and Translational Science

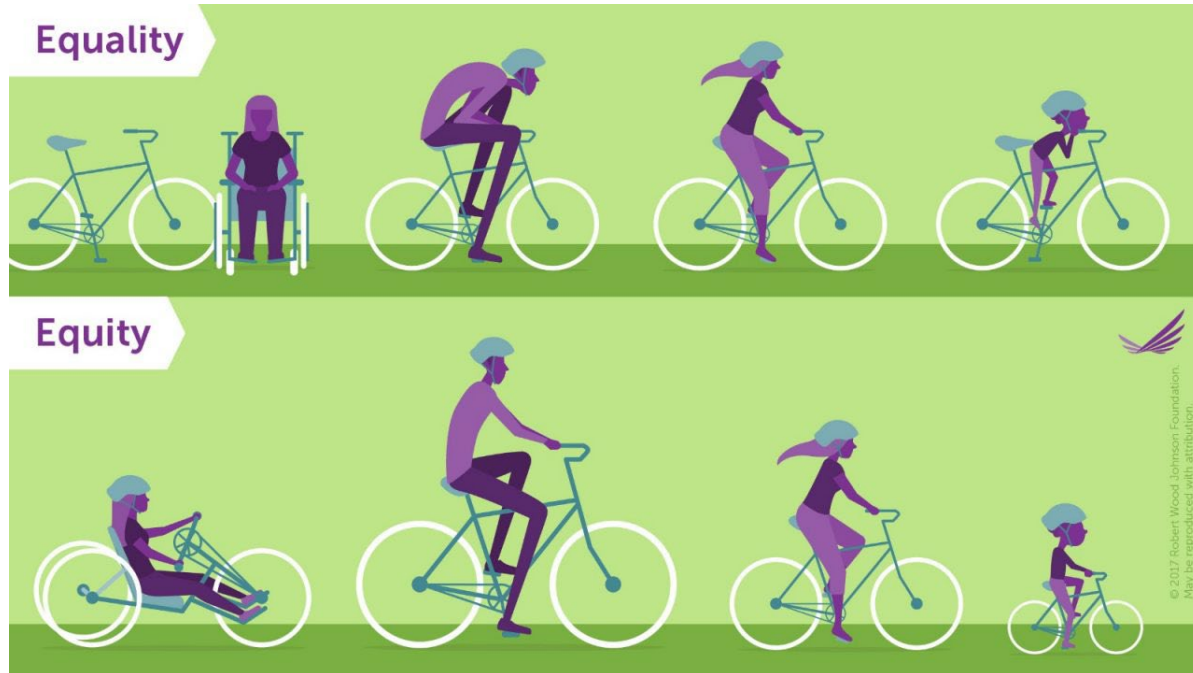


National Center for Medical Rehabilitation Research (NCMRR)

- Through basic, translational, and clinical research, NCMRR fosters development of the scientific knowledge needed to enhance the health, productivity, independence, and quality of life of people with physical disabilities
- Collaborates with many other government agencies and organizations to help advance medical rehabilitation research and care
- Supports research through research grants, training and career development activities, small business and technology grants, and research infrastructure



NIH Designates People with Disabilities a Health Disparities Population

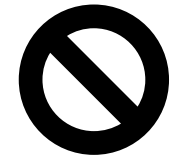
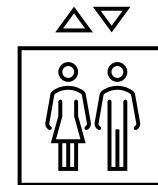
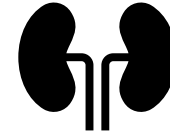
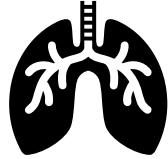


Graphic from the Robert Wood Johnson Foundation

- Designated populations experience significant disparities in their rates of illness, morbidity, mortality and survival, ***driven by social disadvantage***, compared to the health status of the general population.
- A health disparity designation helps to encourage research specific to the health issues and unmet health needs of these populations.
- Complements updated rules that prohibit disability discrimination in the healthcare setting.



Examples of Health Disparities



“Nothing about us without us”

- Community Engagement is essential to health equity work
- Reward community-led programs to reduce health disparities experienced by people with disabilities
- Prize competition open to non-academic, 501(c)(3) organizations based in the US, including advocacy, community, and faith-based organizations
- Partnership with academics allowed but not required
- 2 phase competition
- \$485k in prizes over both phases
- Phase I winners featured at the 2025 NIH Rehabilitation Research Conference



Types of Community Programs



- Adaptive fitness or inclusive physical activity/exercise
- Accessible durable medical equipment and assistive technology
 - Scales, exam tables
 - Eyeglasses, white canes, hearing aids
- Communication services
 - American Sign Language or Augmentative and Alternative Communication
- Mobile screenings or care at community centers
- Vaccinations, dental care, hearing and vision screening
- Behavioral Health
- Reproductive Health
- Nutrition Assistance
- Transportation to medical appointments

And You!

Phase I – Closes November 1, 2024

- Seeking innovative ideas from community groups to improve, expand, diversify or amplify their current programs or offerings. New ideas must be targeting improved health of people with disabilities
- 4- 5 page application describing the organization and their innovative idea for improvements
- Up to 8 winners will be selected to receive \$25,000 each and move to Phase II
- Winners will have a session of lightning talks at the 2025 NIH Rehabilitation Research Conference March 10-11, 2025



Application Sections

- Title and Short Description
- Eligibility Check
- Public Abstract
- Organization and Team
- Area of Health to be Addressed
- Current Work
- Proposal for Improvement
- Potential Impact
- Innovation
- Certify Submission



Phase I - Judging Criteria

- Team/Organization – 25 points
- Proposal/Solution – 35 points
- Potential Impact – 25 points
- Innovation – 15 points



Phase II – Closes January 20, 2026

- The Phase I winners may compete for the Phase II grand prize.
- Teams will have twelve months to implement and measure the impact of their ideas.
- At six months, the teams will have the opportunity to compete for an interim prize.
- Sponsors will provide technical support and matchmaking events.
- The teams should demonstrate how they have enhanced the services and output of their organization.
- At the end of one year, three grand prize winners will get \$75,000 each.



Thank You, Co-Sponsors!

- National Institute on Deafness and Other Communication Disorders
- National Eye Institute
- National Institute on Arthritis, and Musculoskeletal and Skins Diseases
- Division of Program Coordination, Planning and Strategic Initiatives
- NIH Office of the Principal Deputy Director
- National Institute on Disability, Independent Living, and Rehabilitation Research, Administration for Community Living

