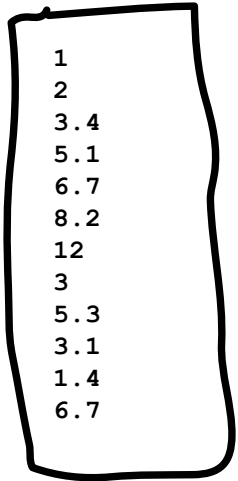




Construction waste skip, Tucson
January 2024



Digitization workflow



Digital inventory



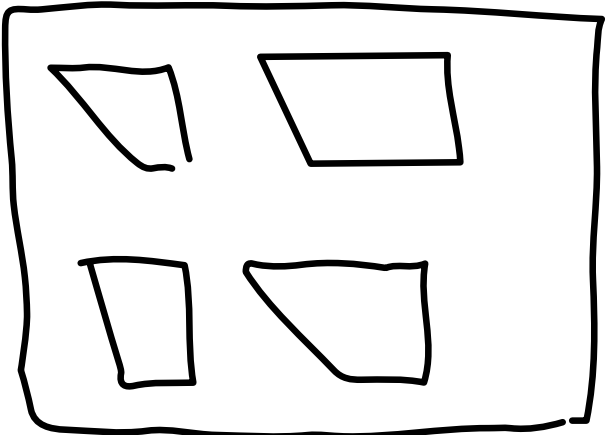
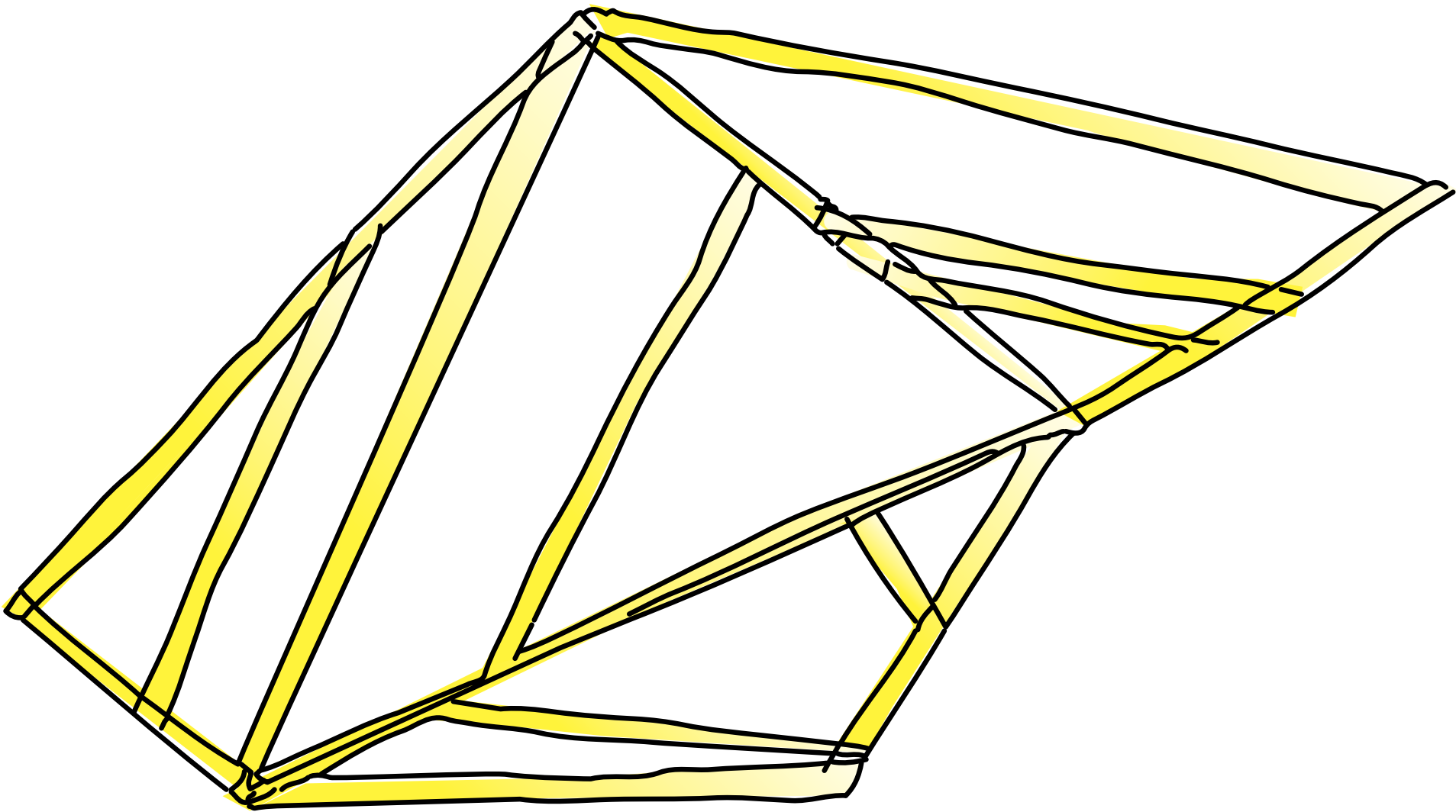
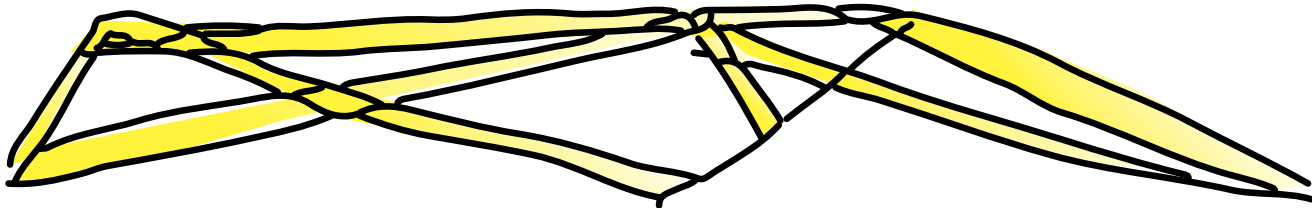
Varied lengths are input into a digital inventory.

Optimized shell design is generated by a customized computational workflow.

We want to explore linking this up directly with imaging technology, so taking a photograph of the waste pile would produce the form + templates automatically



Capable of integrating materials including:
Waste PVC plumbing
Waste Steel Mechanical Servicing
Waste Lumber, Wood and Studwork
Waste Tubular pipe



Digitised Mitre Saw templates



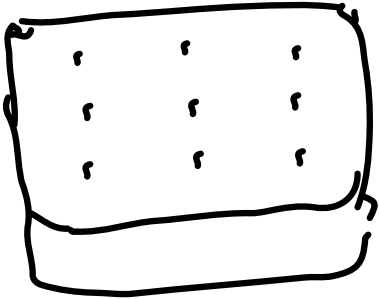
Manual or additively fabricated junctions



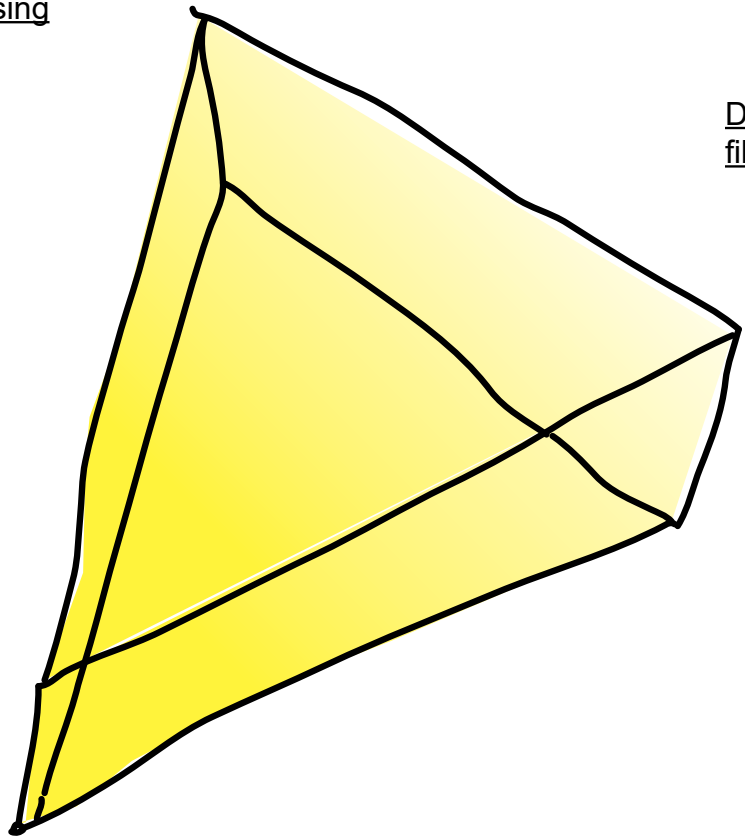
Holographic template capacity



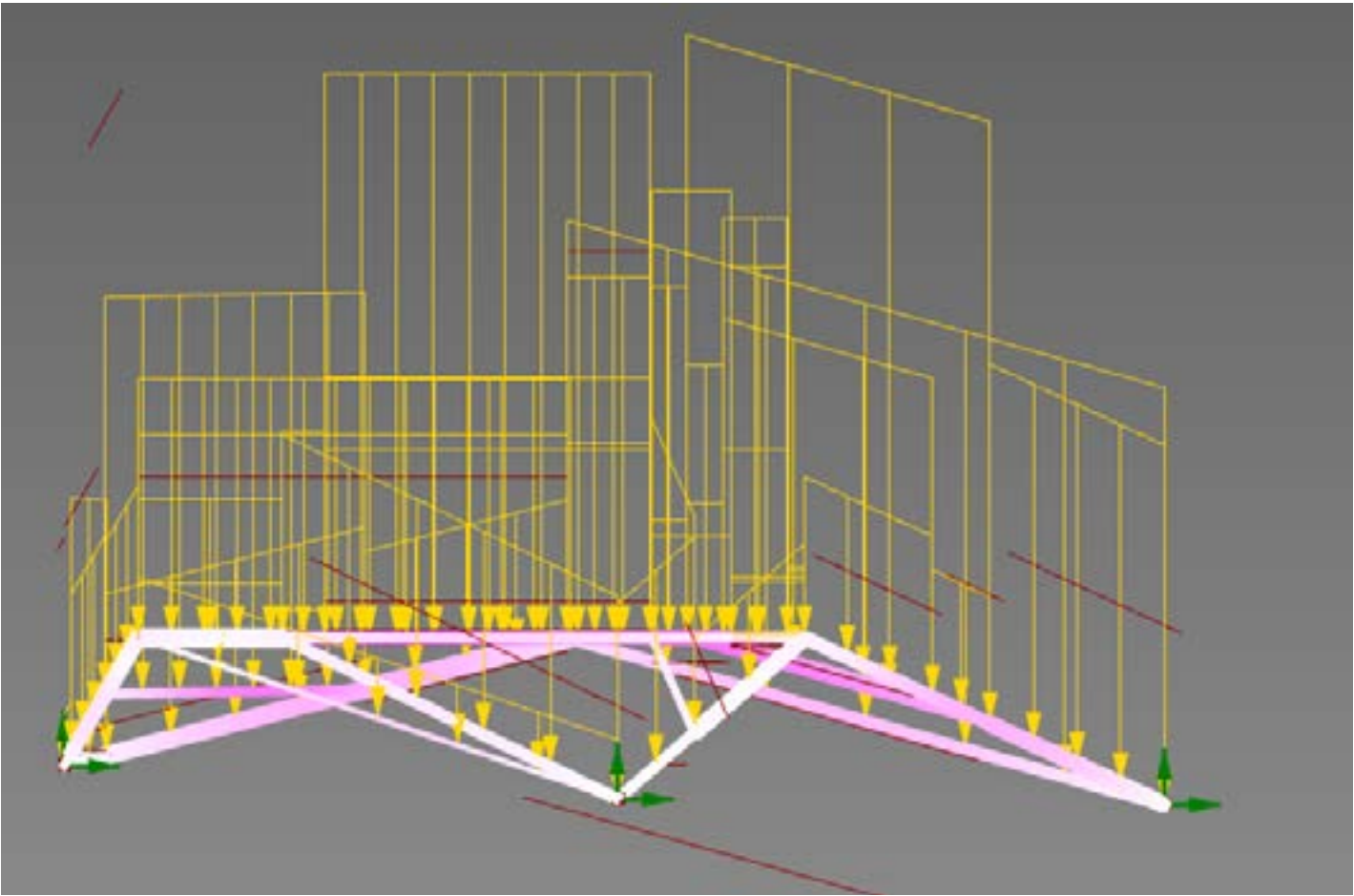
Waste stream mattresses



Mechanical reprocessing



Dimensional filling



2. Recycled mattress-derived Insulation panel

1. Digital workflow for frames from non-standard construction waste units